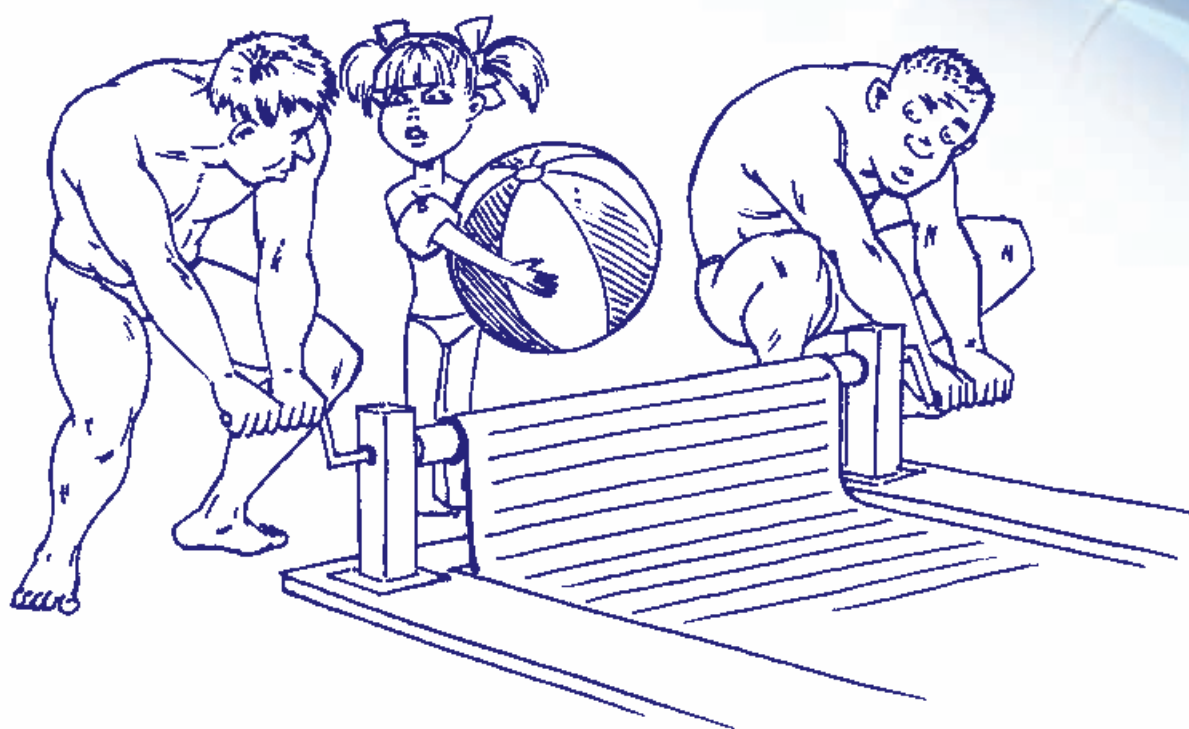


SWIMMING POOL COVERS




MANUAL SAFETY LAMELLA COVERS

MANU series

More practical and aesthetically pleasing than rod-mounted covers, the MANU pool cover is an economical solution that sacrifices neither functionality nor safety. Operating handwheel For greater safety the wheel is retractable. Does not damage pool edges. Height-adjustable legs prevent friction on pool edges. The foot can be retracted over the winter period.

- Pool size: **3x3 to 5x11 m**
- Aluminum-axis Ø 200 mm
- Out of water
- Bare
- Manual feed
- Support loads up to 100 kg

Supply: aluminum-axis 200 mm diameter, 2 feet withstand 150 x 220 mm, made of white painted aluminum for gripping axis, converter, control "wheel" - completewinding device without blades.

	Max. pool width:		Rabat Group
	461195 3,5 m	set	G
	461196 4 m	set	G
	461197 4,5 m	set	G
	461198 5 m	set	G

Possible later motorize!



				Rabat Group
460101	PVC profile 13/83mm	white	1 m2	G
460102	PVC profile 13/83mm	blue	1 m2	G
460103	PVC profile 13/83mm	sand	1 m2	G
460104	PVC profile 13/83mm	grey	1 m2	G
460105	PVC profile 13/83mm	marble blue	1 m2	G
460106	PVC profile 13/83mm	marble sand	1 m2	G
460107	PVC profile 13/83mm	solar	1 m2	G

AUTOMATIC SAFETY LAMELLA COVERS

OPEN ONE series

More practical and aesthetically pleasing than rod-mounted covers. The cover opens and closes in just 3 minutes with one turn of the key. The stop positions are all adjusted and managed together. Does not damage pool edges. pool edges. Height-adjustable legs prevent friction on pool edges. The motor is located in the rotor shaft. Close it and forget it. There is no need for constant supervision once the cover is unrolled.

- Pool size: **3x3 to 5x11 m**
- Aluminum-axis Ø 200 mm
- Out of water
- Bare
- Axial motor
- 24/12 V from mains
- Support loads up to 100 kg

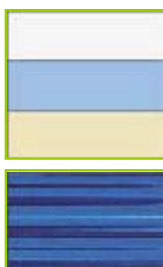
Supply: aluminum-axis 200 mm diameter, 2 feet with stand 150 x 220 mm, made of white painted aluminum to attach an axis, the engine built in the axis 24, 230V/24V transformer, three-way control key built in the leg - complete winding device without blades.



Max. pool width:

460105	3,5 m
460106	4 m
460107	4,5 m
460108	5 m
460109	5,5 m
460110	6 m

Rabat Group	
set	G
set	G
set	G
set	G
set	G
set	G



460101	PVC profile 13/83mm	white
460102	PVC profile 13/83mm	blue
460103	PVC profile 13/83mm	sand
460104	PVC profile 13/83mm	grey
460105	PVC profile 13/83mm	marble blue
460106	PVC profile 13/83mm	marble sand
460107	PVC profile 13/83mm	solar

Rabat Group	
1 m2	G
1 m2	G
1 m2	G
1 m2	G
1 m2	G
1 m2	G
1 m2	G

OPEN CLASSIC series

More practical and aesthetically pleasing than rod-mounted covers. The cover opens and closes in just 3 minutes with one turn of the key. The stop positions are all adjusted and managed together. Does not damage pool edges. pool edges. Height-adjustable legs prevent friction on pool edges. The motor is located in the rotor shaft. Close it and forget it. There is no need for constant supervision once the cover is unrolled.

- Pool size: **3x3 to 7,5x15 m**
- Out of water
- Bare
- Axial motor
- 24/12 V from mains
- Support loads up to 100 kg

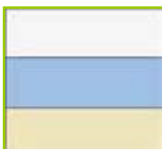
Supply: aluminum-axis 200 mm diameter, 2 feet with stand 150 x 220 mm, made of white painted aluminum to attach an axis, the engine built in the axis 24, 230V/24V transformer, three-way control key built in the leg - complete winding device without blades.



Max. pool width:

460195	3,5 m
460196	4 m
460197	4,5 m
460198	5 m
460199	5,5 m
460200	6 m
460201	7 m
460202	7,5 m

Rabat Group
set G
set G
set G
set G
set G
set G
set G
set G



460101	PVC profile 13/83mm	white
460102	PVC profile 13/83mm	blue
460103	PVC profile 13/83mm	sand
460104	PVC profile 13/83mm	grey
460105	PVC profile 13/83mm	marble blue
460106	PVC profile 13/83mm	marble sand
460107	PVC profile 13/83mm	solar

Rabat Group
1 m2 G
1 m2 G
1 m2 G
1 m2 G
1 m2 G
1 m2 G
1 m2 G

SOLAR ENERGY series

Can run for up to 40 cycles (on the 4x8 model) in the event of total darkness, while keeping one safety cycle. Solar Energy's mechanism is friction-driven and can be switched to manual mode at any time to make the pool safe. The cover opens and closes in just 3 minutes with one turn of the key. The stop positions are all adjusted and managed together. Close it and forget it. There is no need for constant supervision once the cover is unrolled. For greater safety, an alarm sounds when the batteries run low, indicating that one more full open/close cycle is left. Just 5 hours of sunshine per day is enough for it to run properly. The motor is located in the rotor shaft. The base can be retracted in the winter.

- Pool size: **3x3 to 10x25 m**
- Out of water
- Bare
- Axial motor
- Solar power
- Support loads up to 100 kg

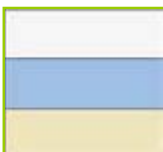


Max. pool width:

460119	3,5 m
460120	4,0 m
460121	4,5 m
460122	5,0 m
460123	5,5 m
460124	6,0 m
460125	7,0 m
460126	7,5 m

Rabat Group

G
G
G
G
G
G
G
G



460101	PVC profile 13/83mm	white
460102	PVC profile 13/83mm	blue
460103	PVC profile 13/83mm	sand
460104	PVC profile 13/83mm	grey
460105	PVC profile 13/83mm	marble blue
460106	PVC profile 13/83mm	marble sand
460107	PVC profile 13/83mm	solar

Rabat Group

1 m2 G
1 m2 G
1 m2 G
1 m2 G
1 m2 G
1 m2 G
1 m2 G

AUTOMATIC UNDERWATER SAFETY LAMELLA COVERS

IMM 'BOX series

Special high tech materials providing complete corrosion resistance (limited to pools of a surface area 5x11m)

5-year anti-corrosion guarantee for mechanical parts
(See terms and conditions at your sales centre)

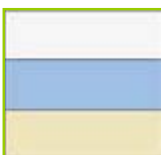
The cover opens and closes in just 3 minutes with one turn
positions are all adjusted and managed together. Close it and forget it. There is no need for constant supervision once the cover is unrolled. It can send information on its status to the water treatment equipment to make adjustments.

- Pool size: **3x3 to 10x25 m**
- Submerged
- Motor in dry housing
- 24/12 V from mains
- Support loads up to 100 kg

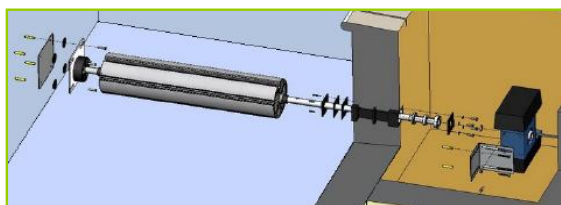


	Pool size:		Rabat Group
460001	4 x 12 m	set	G
460002	4 x 12 - 25 m	set	G
460003	4,5 x 10 m	set	G
460004	4,5 x 10 - 25 m	set	G
460005	5 x 25 m	set	G
460006	5,5 x 23 m	set	G
460007	6 x 20 m	set	G
460008	7 x 16 m	set	G
460009	7,5 x 15 m	set	G

BUILT IN - COMPONENTS



- | | | |
|--------|---|---|
| 460073 | Wall penetration to the motor, 220 mm long | G |
| 460074 | Wall penetration to the motor, 100 mm long | G |
| 460074 | Complete set of embedded parts | G |





				Rabat Group
460101	PVC profile 13/83mm	white	1 m2	G
460102	PVC profile 13/83mm	blue	1 m2	G
460103	PVC profile 13/83mm	sand	1 m2	G
460104	PVC profile 13/83mm	grey	1 m2	G
460105	PVC profile 13/83mm	marble blue	1 m2	G
460106	PVC profile 13/83mm	marble sand	1 m2	G
460107	PVC profile 13/83mm	solar	1 m2	G

AUTOMATIC SAFETY LAMELLA COVERS OVER WATER REEL SYTEMS

SATURN series - lamellas 9/50 mm

dia stainless steel. 24 V motor for cover drive with install electronics and with end switches, control key switch, transformer 230/24V

	Pool size:		Rabat Group
	460301 3,0 x 12,0 m	set	G
	460302 3,5 x 12,0 m	set	G
	460303 4,0 x 12,0 m	set	G
	460304 4,5 x 12,0 m	set	G
	460305 5,0 x 12,0 m	set	G
	460306 5,5 x 12,0 m	set	G
	460307 6,0 x 12,0 m	set	G
	460392 7,0 x 15,0 m	set	G
	460393 8,0 x 15,0 m	set	G
	460308 non standard size	set	G



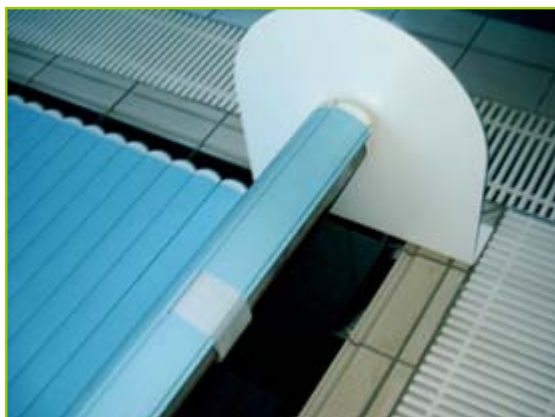
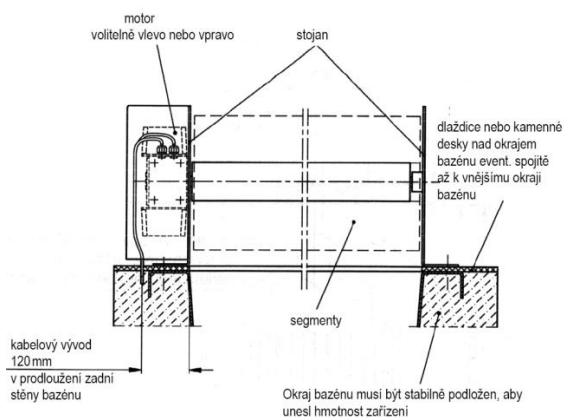
LAMELLAS

PVC lamellas, dimensions 9/50 mm, colour - light blue, light grey, white. Price € /1 m2



460309 **PVC profile 9/50**

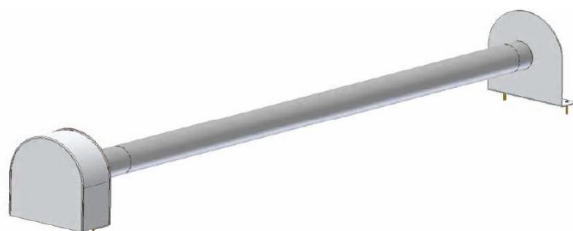
Rabat Group
1 m2 G



PLUTO series - lamellas 9/50 mm

Aluminium bearing bracket with plastic box for dia putting, with white surface form, dia stainless steel. 24 V motor for cover drive with install electronics and with end switches, control key switch, transformer 230/24 V.

	Pool size:		Rabat Group
460310	3,0 x 12,0 m	set	G
460311	3,5 x 12,0 m	set	G
460312	4,0 x 12,0 m	set	G
460313	4,5 x 12,0 m	set	G
460314	5,0 x 12,0 m	set	G
460315	5,5 x 12,0 m	set	G
460316	6,0 x 12,0 m	set	G
460317	7,0 X 15,0 m	set	G
460394	8,0 x 15,0 m	set	G
460318	non standard size	set	G



LAMELLAS

PVC lamellas, dimensions 13/60 mm, colour - light blue, light grey, white, translucent, solar (translucent, black). Price €/1 m2



				Rabat Group
460319	PVC profile 13/60	(white, blue, grey)	1 m2	G
460320	PVC profile 13/60	(translucent)	1 m2	G
460321	PVC profile 13/60	(solar)	1 m2	G
460322	PVC profile 15/80	(white, blue, grey)	1 m2	G
460323	PVC profile 15/80	(translucent)	1 m2	G
460324	PVC profile 15/80	(solar)	1 m2	G

POLYCARBONAT lamellas, dimensions 13/60 mm, colour - translucent, solar(translucent/black), steel blue, (translucent/blue), other colours on favour, price €/ 1 m2.



460358	POLYCARBONAT profile 13/60 translucent		1 m2	G
460359	POLYCARBONAT profile 13/60 solar (translucent/black)		1 m2	G
460360	POLYCARBONAT profile 13/60 steel blue (translucent/blue)		1 m2	G
460361	POLYCARBONAT profile 13/60 non standard colour, choice of RAL		1 m2	G
460362	POLYCARBONAT profile 13/60 azuro blue		1 m2	G

COVERS FOR OWER-WATER REEL SYSTEMS

ALUMINIUM COVER

Covers are made from aluminium foamed PU in amplify form, with end lids - rivet, white surface form, Max. load: 40 kg, half-circular design
The middle bracket has been to used up 5,5 m.



				Rabat Group
460363	Max. pool dimension:	5,0 x 12,0 m	1 m	G
460364	Max. pool dimension:	7,0 x 15,0 m	1 m	G
460365	Non standard size		1 m	G

Other colours RAL on favour (supplementary charge)



Placing of ower-water reel system



SITTING BENCH - MADE OF HARD WOOD

Covers made as sitting bench of SIPO-hard wood, screws of stainless steel.
 Max: load: 200 kg, made as self-carrying without middle bracket

The price consists of: separated seat, backside, front plate - there is the possibility combine with other materials.

The middle bracket has been to used up 7,0 m.



SEPARATED SEAT

				Rabat Group
460366	Max. pool dimension:	5,0 x 12,0 m	1 m	G
460367	Max. pool dimension:	7,0 x 15,0 m	1 m	G
460374	Non standard size		1 m	G

BACKSIDE AND FRONT PLATE

				Rabat Group
460368	Max. pool dimension:	5,0 x 12,0 m	1 m	G
460369	Max. pool dimension:	7,0 x 15,0 m	1 m	G
460375	Non standard size		1 m	G



Placing of over-water reel system



SITTING BENCH - MADE OF PVC

Covers made as sitting bench of PVC profile, inclusive of endings, white design, screws of stainless steel.
Max: load: 200 kg, made as self-carrying without middle bracket

The price consists of: separated seat, backside, front plate - there is the possibility combine with other materials.

The middle bracket has been to used up 7,0 m.

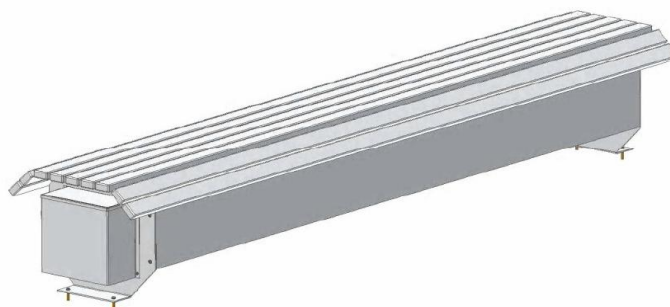


SEPARATED SEAT

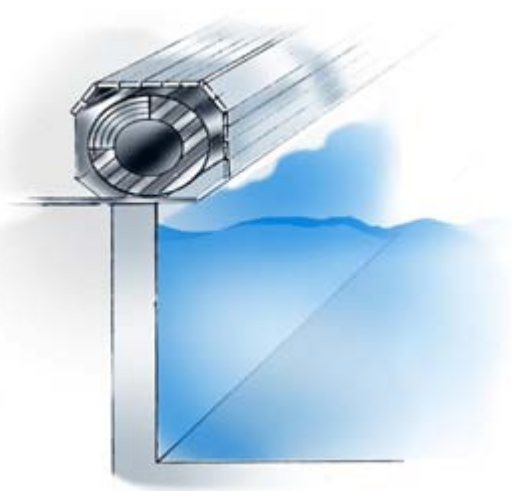
				Rabat Group
460370	Max. pool dimension:	5,0 x 12,0 m	1 m	G
460371	Max. pool dimension:	7,0 x 15,0 m	1 m	G
460374	Non standard size		1 m	G

BACKSIDE AND FRONT PLATE

				Rabat Group
460372	Max. pool dimension:	5,0 x 12,0 m	1 m	G
460373	Max. pool dimension:	7,0 x 15,0 m	1 m	G
460375	Non standard size		1 m	G

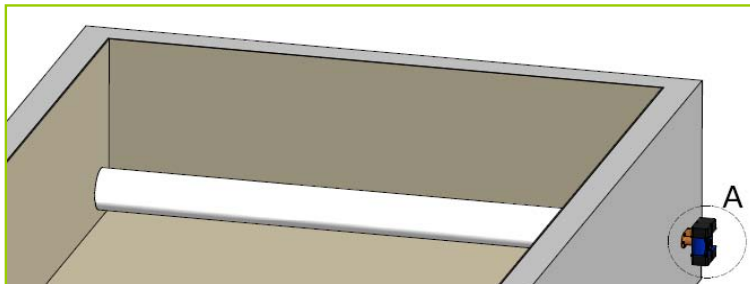


Placing of over-water reel system



UNDER-WATER REEL SYSTEMS

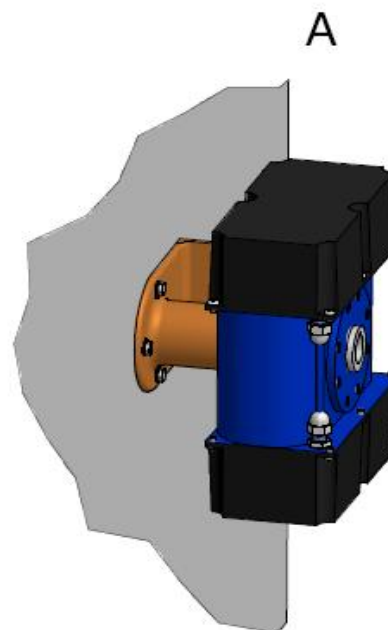
Rewinder - underground system with slide ring seal and external drive with lateral engine shaft or passable shaft



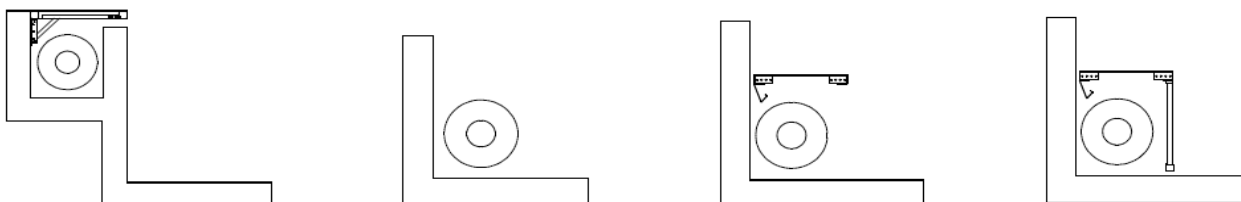
Bearing flange for stainless steel shaft and drive with plastic bearing, set of seals with adjusting ring, linkage
 Stainless steel shaft with stainless steel bearing pin and adjusting ring, electric drive 24V DC, optionally with interior or exterior electronics and indicator lamps for malfunction source. Impulse end switch (RSC), plug connector for remote control pre-installed.
 Transformer 230/24V with illuminated display.
 Control switch on-wall or in-wall.
 Drive unit maintenance-free.
 Up to a pool length of max. 15 m (special size on request)

Standard pre-installation parts to be set in concrete or for installation at a later date.

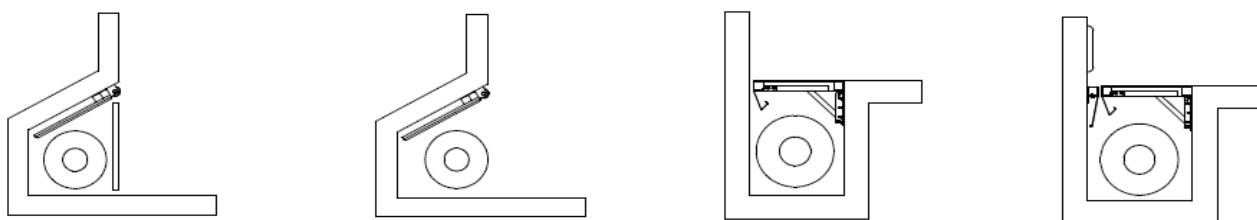
POM (polyoxymethylene) gliders are necessary for the niched rolling shutter in the extension of the pool bottom. One pool glider is necessary per current meter of the pool breadth.



Installation options with lateral engine shaft



Installation options with passable shaft



JUPITER series - lamellas 9/50 mm

Set of seals with bearing unit and with contra bearing, plastic box for dia putting, dia stainless steel, unit box. 24 V motor for cover drive with install electronics and with end switches, control key switch, transformer 230/24 V.



Rabat Group

460322	Max. pool dimension:	3,0 x 12,0 m	set	G
460323	Max. pool dimension:	3,5 x 12,0 m	set	G
460324	Max. pool dimension:	4,0 x 12,0 m	set	G
460325	Max. pool dimension:	4,5 x 12,0 m	set	G
460326	Max. pool dimension:	5,0 x 12,0 m	set	G
460327	Max. pool dimension:	5,5 x 12,0 m	set	G
460328	Max. pool dimension:	6,0 x 12,0 m	set	G
460392	Max. pool dimension:	7,0 x 15,0 m	set	G
460393	Max. pool dimension:	8,0 x 15,0 m	set	G
460329	Max. pool dimension:	non standard size	set	G

LAMELLAS

PVC lamellas, dimensions 9/50 mm, colour - light blue, light grey, white. Price €/1 m2



460309	PVC profile 9/50	1 m2	G
--------	-------------------------	------	---



URAN series - lamellas 13/60 mm

Set of seals with bearing unit and with contra bearing, plastic box for dia putting, dia stainless steel, unit box. 24 V motor for cover drive with install electronics and with end switches, control key switch, transformer 230/24 V.



					Rabat Group
460340	Max. pool dimension:	3,0 x 12,0 m	set	G	
460341	Max. pool dimension:	3,5 x 12,0 m	set	G	
460342	Max. pool dimension:	4,0 x 12,0 m	set	G	
460343	Max. pool dimension:	4,5 x 12,0 m	set	G	
460344	Max. pool dimension:	5,0 x 12,0 m	set	G	
460345	Max. pool dimension:	5,5 x 12,0 m	set	G	
460346	Max. pool dimension:	6,0 x 12,0 m	set	G	
460347	Max. pool dimension:	7,0 X 15,0 m	set	G	
460394	Max. pool dimension:	8,0 x 15,0 m	set	G	
460348	Max. pool dimension:	non standard size	set	G	

LAMELLAS

PVC lamellas, dimensions 13/60 mm, colour - light blue, light grey, white, translucent, solar (translucent, black). Price €/1 m²

460319	PVC profile 13/60	(white, blue, grey)	1 m ²	G
460320	PVC profile 13/60	(translucent)	1 m ²	G
460321	PVC profile 13/60	(solar)	1 m ²	G
460322	PVC profile 15/80	(white, blue, grey)	1 m ²	G
460323	PVC profile 15/80	(translucent)	1 m ²	G
460324	PVC profile 15/80	(solar)	1 m ²	G

POLYCARBONAT lamellas, dimensions 13/60 mm, colour - translucent, solar(translucent/black), steel blue, (translucent/blue), other colours on favour, price €/ 1 m².

460358	POLYCARBONAT profile 13/60 translucent		1 m ²	G
460359	POLYCARBONAT profile 13/60 solar (translucent/black)		1 m ²	G
460360	POLYCARBONAT profile 13/60 steel blue (translucent/blue)		1 m ²	G
460361	POLYCARBONAT profile 13/60 non standard colour, choice of RAL		1 m ²	G
460362	POLYCARBONAT profile 13/60 azuro blue		1 m ²	G

STANDARD PRE-INSTALLATION PARTS

Rewinder - underground system with slide ring seal and external drive with lateral engine shaft

For concrete and liner pools

- 460395 **Cast wall penetration, cast counter bearing**
to be concreted in, with mounting bearing



for wall thickness 24/25 cm
for wall thickness 30 cm

**Rabat
Group**

G
G

- 460396 **For installation at a later date tapping drill hole**
2 stainless steel flanges with 4 stud bolts and mounting material



G

For stainless steels pools

- 460397 **Pre-installation flange for drive side to be welded in**
with 6 stud bolts on both sides, pre-installation flange
for counter bearing to be welded in with 4 stud bolt



G

- 460398 **Should the stainless steel pool be filled from behind**
with concrete a stainless steel tube \varnothing 54mm for
the motor is welded into the pre-installation flange

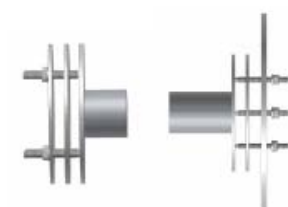


G

For plastis pools

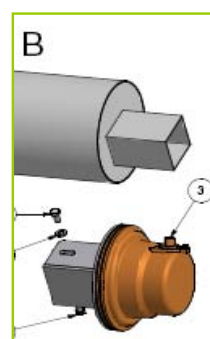
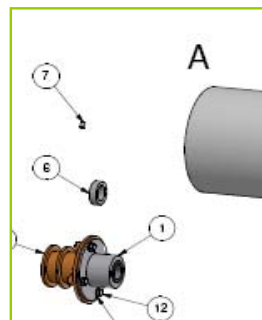
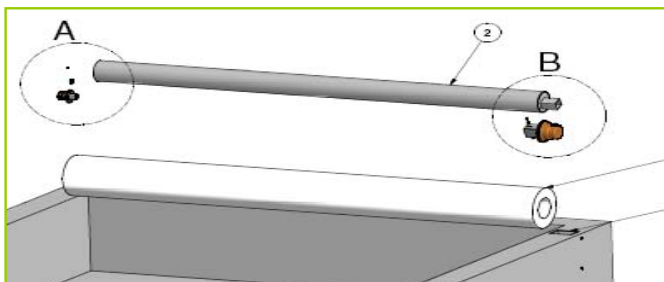
in the area of the shaft fastening, reinforcements worked in by the pool manufacturer.

- 460399 **Stainless steel flanges with stud bolts directly welded on :**
the seal flange and/or counter bearing (are included in the system
price) incl. reinforcement flanges, seal and mounting material



G

**Rewinder - underground system with direct drive (RSP)
 direct wall installation (no motor shaft necessary)
 alternatively to be mounted**

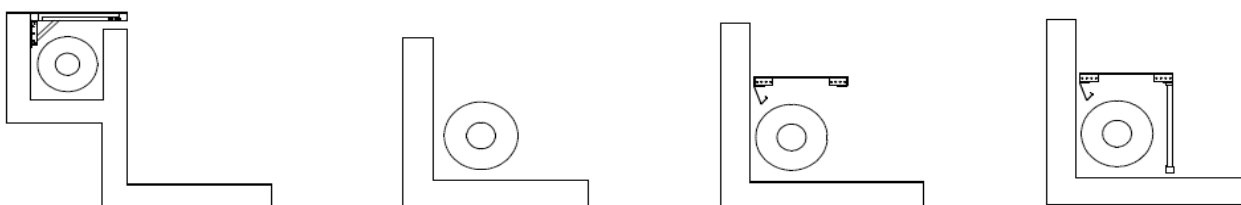


Bearing flange for stainless steel shaft, plastic bearings, electric drive RSP 34 V DC and impulse end switch with sealed in 3 m cable (special lengths on request), carrier plate with nut, VA stainless steel shaft with bearing pins. Please note: The running of the cable as from the end of the drive (after 4m) and including the connector necessary is to be guaranteed for by the custome. Impulse control in transformer 230/24V with illuminated display, overload protection, control switch on-wall or in-wall Indicator lamps for malfunction source Plug connector for remote control pre-installed. Drive unit maintenance - free. Up to a pool length of max. 15,0 m (special sizes on requested)

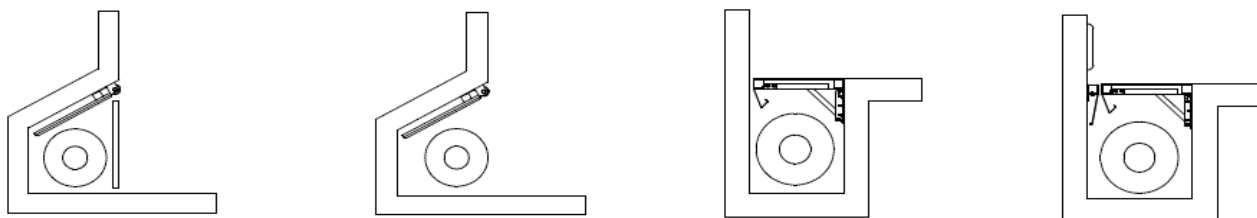
Standard pre-installation parts to be concreted in or for installation at a later date for RSP.

POM (polyoxymethylene) gliders are necessary for the niched rolling shutter in the extension of the pool bottom.

Installation options with lateral engine shaft



Installation options with passable shaft



MARS series - lamellas 9/50 mm

Motor over-water surface with chaine transmission and with plastic box for dia putting, dia stainless steel, unit box. 24 V motor for cover drive with install electronics and with end switches, control key switch, transformer 230/240 V.



				Rabat Group
460331	Max. pool dimension:	3,0 x 12,0 m	set	G
460332	Max. pool dimension:	3,5 x 12,0 m	set	G
460333	Max. pool dimension:	4,0 x 12,0 m	set	G
460334	Max. pool dimension:	4,5 x 12,0 m	set	G
460335	Max. pool dimension:	5,0 x 12,0 m	set	G
460336	Max. pool dimension:	5,5 x 12,0 m	set	G
460337	Max. pool dimension:	6,0 x 12,0 m	set	G
460300	Max. pool dimension:	7,0 x 15,0 m	set	G
460299	Max. pool dimension:	8,0 x 15,0 m	set	G
460338	Max. pool dimension:	non standard size	set	G

LAMELLAS

PVC lamellas, dimensions 9/50 mm, colour - light blue, light grey, white. Price €/1 m2

460309	PVC profile 9/50	1 m2	G
--------	------------------	------	---



VENUS series - lamellas 13/60 mm

Motor over-water surface with chaine transmission and with plastic box for dia putting, dia stainless steel, unit box. 24 V motor for cover drive with install electronics and with end switches, control key switch, transformer 230/240 V.



					Rabat Group
460349	Max. pool dimension:	3,0 x 12,0 m	set	G	
460350	Max. pool dimension:	3,5 x 12,0 m	set	G	
460351	Max. pool dimension:	4,0 x 12,0 m	set	G	
460352	Max. pool dimension:	4,5 x 12,0 m	set	G	
460353	Max. pool dimension:	5,0 x 12,0 m	set	G	
460354	Max. pool dimension:	5,5 x 12,0 m	set	G	
460355	Max. pool dimension:	6,0 x 12,0 m	set	G	
460356	Max. pool dimension:	7,0 X 15,0 m	set	G	
460298	Max. pool dimension:	8,0 x 15,0 m	set	G	
460357	Max. pool dimension:	non standard size	set	G	

LAMELLAS

PVC lamellas, dimensions 13/60 mm, colour - light blue, light grey, white, translucent, solar (translucent, black). Price €/1 m2

					Rabat Group
460319	PVC profile 13/60	(white, blue, grey)	1 m2	G	
460320	PVC profile 13/60	(translucent)	1 m2	G	
460321	PVC profile 13/60	(solar)	1 m2	G	
460322	PVC profile 15/80	(white, blue, grey)	1 m2	G	
460323	PVC profile 15/80	(translucent)	1 m2	G	
460324	PVC profile 15/80	(solar)	1 m2	G	

POLYCARBONAT lamellas, dimensions 13/ mm, colour - translucent, solar(translucent/black), steel blue, (translucent/blue), other colours on favour, price €/ 1 m2.

					Rabat Group
460358	POLYCARBONAT profile 13/60	translucent	1 m2	G	
460359	POLYCARBONAT profile 13/60	solar (translucent/black)	1 m2	G	
460360	POLYCARBONAT profile 13/60	steel blue (translucent/blue)	1 m2	G	
460361	POLYCARBONAT profile 13/60	non standard colour, choice of RAL	1 m2	G	
460362	POLYCARBONAT profile 13/60	azuro blue	1 m2	G	

STANDARD PRE-INSTALLATION PARTS

Rewinder - underground system with direct drive (RSP)
direct wall installation (no motor shaft necessary)

For concrete and liner pools iwth and without inner sealing

Rabat
Group

- 460297 **Installation set for direct drive to be concreted in,**
for new constructions and reconstruction
counter bearing, pre-installation flange, installation
pot and connector with flexible calbe



G

- 460296 **for subsequent installation with tapping drill hole**
stainless steel flange with stud bolts, tube supports,
counter bearing and fastner



G

- 460295 **(on request) to be mounted with side plates for**
subsequent installation, size of steel plate depnedent
on depth of pool (as from a shaft installation depth
of 800 m)



G

For stainless steels pools

- 460294 **Pre-installation flange to be welded in with tube supports**
and 3 m flexible cable incl. connecto, counter bearing to
be welded in (included in system price)



G

For plastis pools

- 460293 **Pre-installation flange with stud bolts, tube supportsand**
3 m flexible, counter bearing (included in system price)
for direct installation in pool



G

MANUAL COVER ROLLERS

COMPLETE STAINLESS STEEL REEL SYSTEM

(with telescopic tube)

This type of complete stainless steel reel system with telescopic tube is produced in three modifications: fixed installation, portable and mobile (wheels added).

Stands are made of polished stainless steel with plastic parts. Telescopic tube is made of eloxed aluminium. The package includes all components to fixing the cover, straps and reel telescopic tube.

Complete reel system with telescopic tube contains: stainless steel stands, telescopic tube, set of straps and catches to fasten the solar cover and safety catch to prevent the rolled up cover unwind.



**Rabat
Group**



460400 **CORFU** 2,6 - 4,3 m

A

460401 **CORFU** 4,1 - 5,7 m

A

460402 **CORFU** 5,3 - 6,9 m

A



**Rabat
Group**

460420 **CORFU - ADJUSTABLE** 2,6 - 4,3 m

A

460421 **CORFU - ADJUSTABLE** 4,1 - 5,7 m

A

460422 **CORFU - ADJUSTABLE** 5,3 - 6,9 m

A



**COMPLETE STAINLESS STEEL REEL SYSTEM
PORTABLE WITH TELESCOPIC TUBE**



460403 **MIKOS** 2,6 - 4,3 m

460404 **MIKOS** 4,1 - 5,7 m

460405 **MIKOS** 5,3 - 6,9 m

**Rabat
Group**

A

A

A



**COMPLETE STAINLESS STEEL REEL SYSTEM
PLACE ON THE WALL**

430413 **CORFU-WALL - right** 2,6 - 4,3 m
430423 **CORFU-WALL - left** 2,6 - 4,3 m

460414 **CORFU-WALL - right** 4,1 - 5,7 m
460424 **CORFU-WALL - left** 4,1 - 5,7 m

460415 **CORFU-WALL - right** 5,3 - 6,9 m
460425 **CORFU-WALL - left** 5,3 - 6,9 m

**Rabat
Group**

A

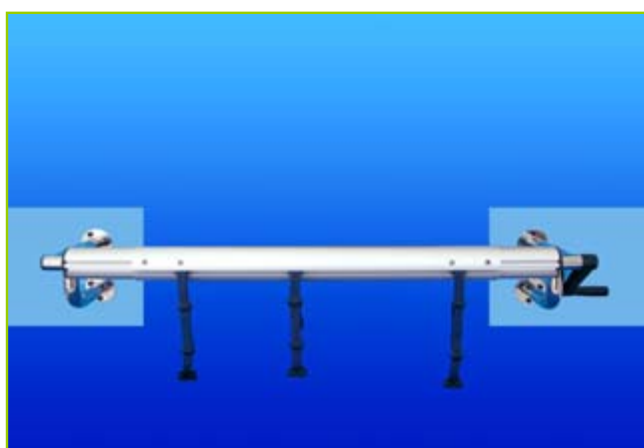
A

A

A

A

A



**COMPLETE STAINLESS STEEL REEL SYSTEM
MOBILE WITH TELESCOPIC TUBE**

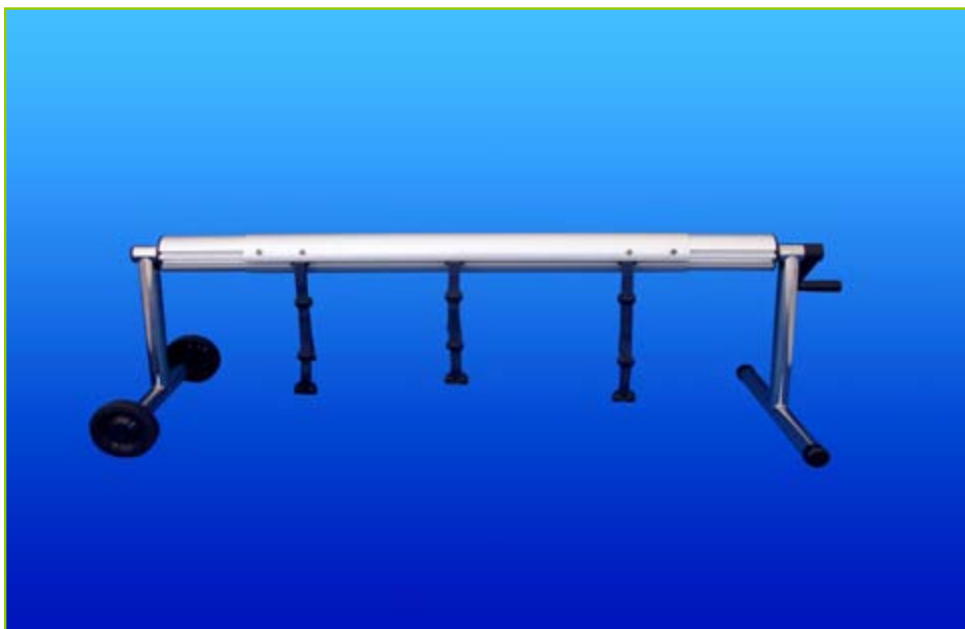

460406	SAMOS	2,6 - 4,3 m
460407	SAMOS	4,1 - 5,7 m
460408	SAMOS	5,3 - 6,9 m

**Rabat
Group**

A

A

A


ACCESSORIES FOR COVER ROLLERS


460426	Fixed reel system - stainless steel stands	
460411	Fixed reel system adjustable - stainless steel stands	
460410	Portable reel system - stainless steel stands	
460411	Mobile reel system - stainless steel stands	
460427	Wall reel system right - stainless steel stands	
460428	Wall reel system left - stainless steel stands	



460412	Telescopic tube 2,6 - 4,3 m (5 parts)	tube (1,3+2,6+1,3)	A
460413	Telescopic tube 4,1 - 5,7 (7 parts)	tube (2+2,6+2)	A
460414	Telescopic tube 5,3 - 6,9 (10 parts)	tube (2,6+2,6+2,6)	A
460415	Set to fasten the cover and telescopic tube, 1 piece Straps: 1,5 m		A

**Rabat
Group**

A

A

A

A

A

A

BUBBLE SOLAR FOLIE COVERING

460416	Solar cover 400 mic width: 3 - 3,5 - 4 - 4,5 - 5 - 5,5 - 6 French blue, cutted
--------	---

Price :€/m2
**Rabat
Group**

A